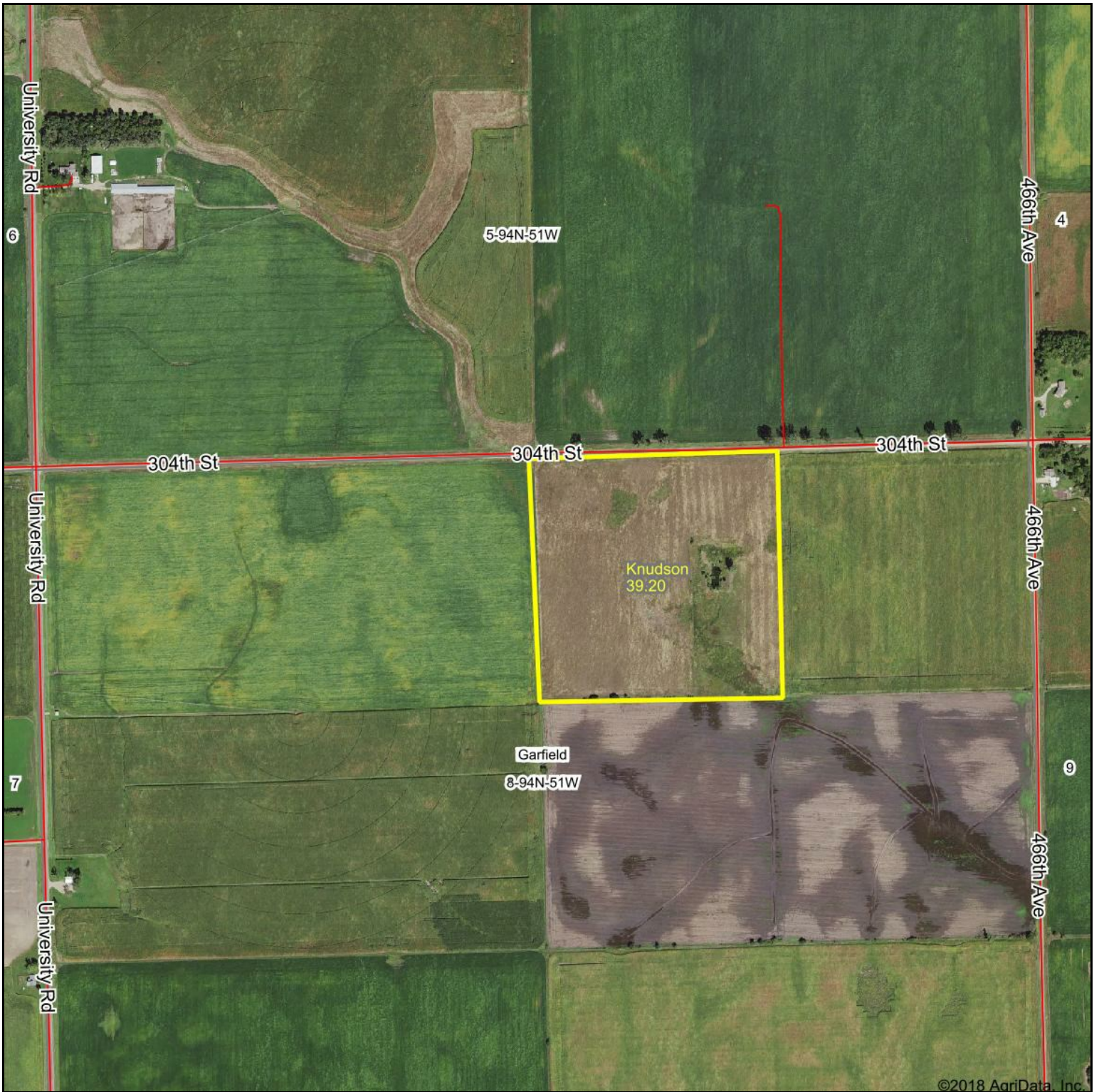


Aerial Map



©2018 AgriData, Inc.

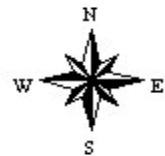
map center: 42° 58' 52.03, -96° 53' 39.65

TOTAL
AUCTIONS & REAL ESTATE

Maps Provided By:

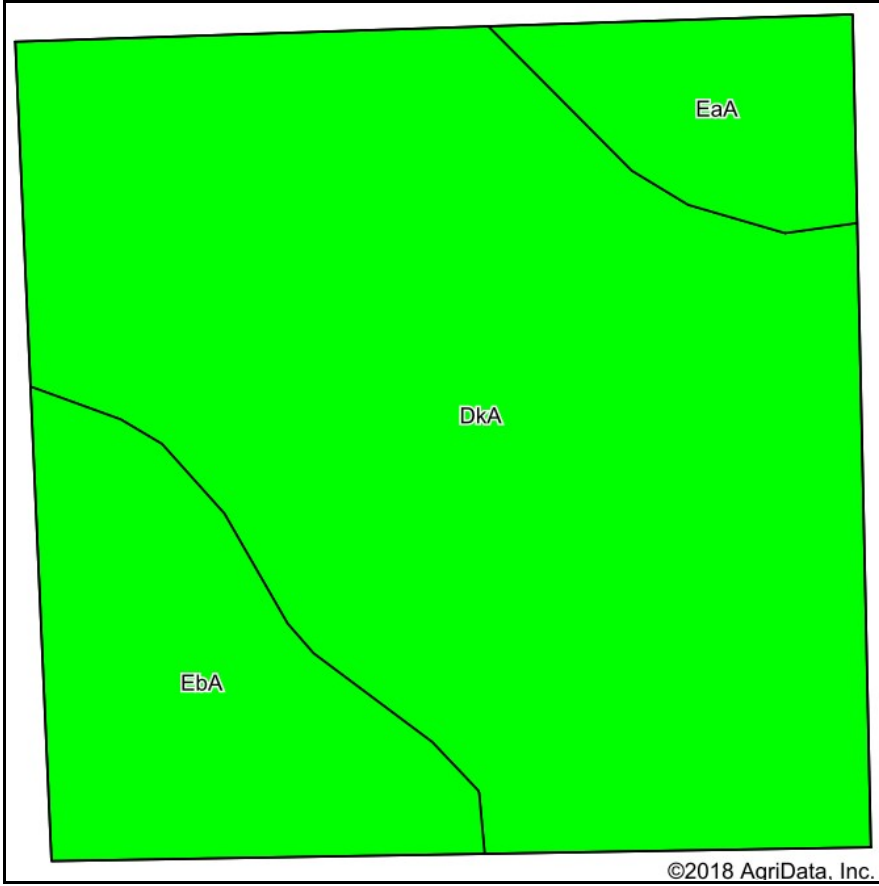
 **surety**
CUSTOMIZED ONLINE MAPPING
© AgriData, Inc. 2018 www.AgriDataInc.com

8-94N-51W
Clay County
South Dakota

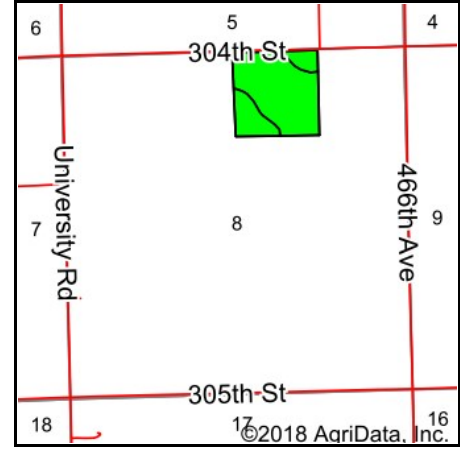


4/18/2018

Soils Map



Soils data provided by USDA and NRCS.



State: **South Dakota**
 County: **Clay**
 Location: **8-94N-51W**
 Township: **Garfield**
 Acres: **39.2**
 Date: **4/18/2018**



Maps Provided By:



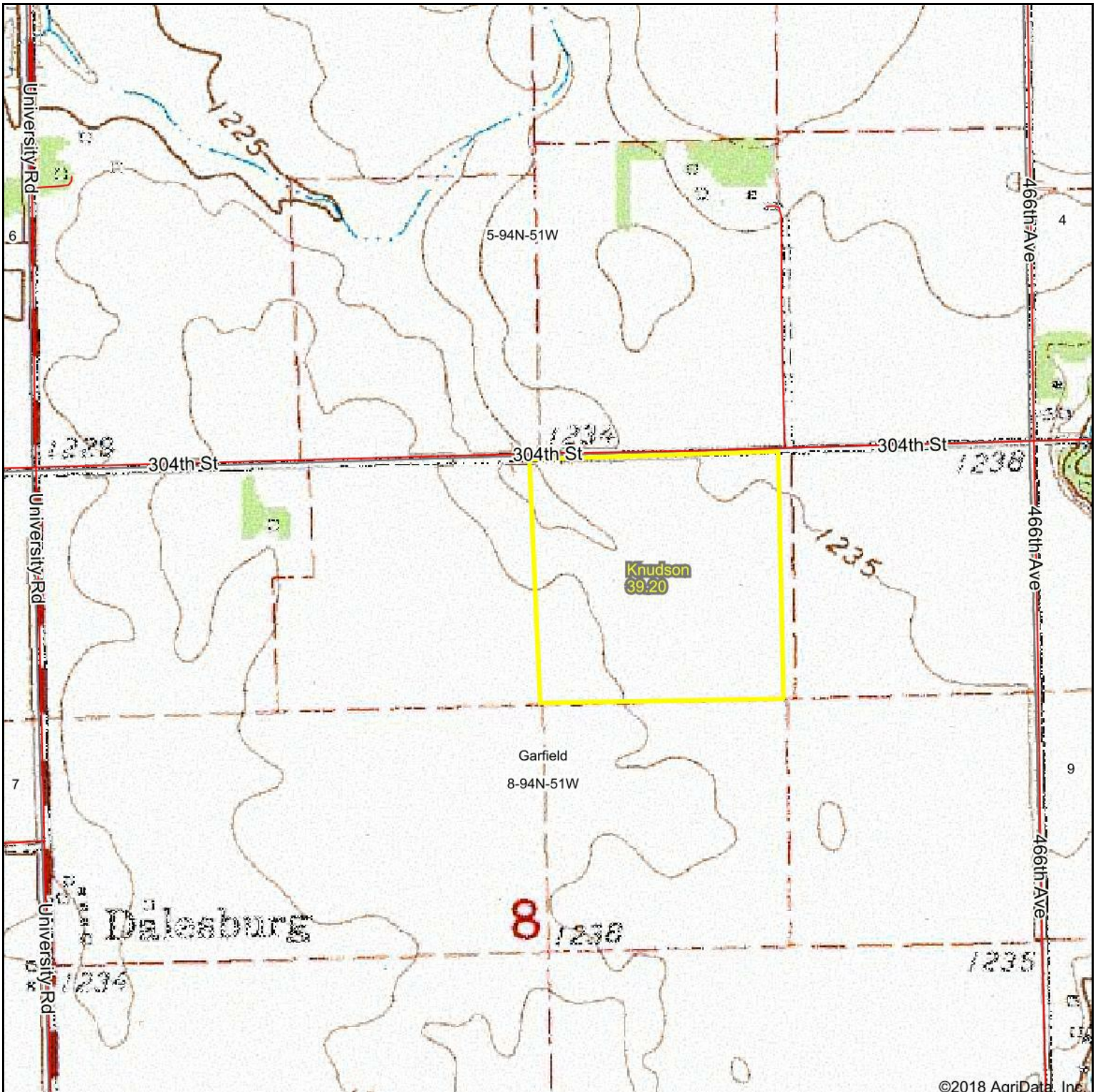
Area Symbol: SD027, Soil Area Version: 20

Code	Soil Description	Acres	Percent of field	FI Legend	Non-Irr Class *c	Range Production (lbs/acre/yr)	Productivity Index	State Productivity Index	Corn	NCCPI Overall	NCCPI Corn	NCCPI Small Grains
DkA	Davison-Tetonka-Egan complex, 0 to 3 percent slopes	28.95	73.9%		Ils	4694	75	72	71	45	40	29
EbA	Egan-Clarno-Chancellor complex, 0 to 3 percent slopes	7.13	18.2%		Iw	4009	88	84	92	53	46	42
EaA	Egan-Chancellor-Davison complex, 0 to 3 percent slopes	3.12	8.0%		Iw	4284	84	81	84	51	44	38
Weighted Average						4536.8	78.1	74.9	75.9	46.9	41.4	32.1

*c: Using Capabilities Class Dominant Condition Aggregation Method

Soils data provided by USDA and NRCS.

Topography Map



©2018 AgriData, Inc.

map center: 42° 58' 52.03, -96° 53' 39.65

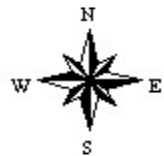
TOTAL
AUCTIONS & REAL ESTATE

Maps Provided By:

 **surety**[®]
CUSTOMIZED ONLINE MAPPING

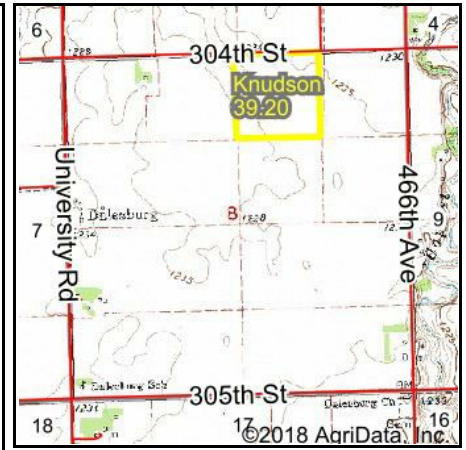
© AgriData, Inc. 2018 www.AgriDataInc.com

8-94N-51W
Clay County
South Dakota



4/18/2018

Wetlands Map



State: **South Dakota**
 Location: **8-94N-51W**
 County: **Clay**
 Township: **Garfield**
 Date: **4/18/2018**

TOTAL
 AUCTIONS & REAL ESTATE

Maps Provided By:



© AgriData, Inc. 2018

N



S

Classification Code	Type	Acres
PEM1A	Freshwater Emergent Wetland	6.10
PABFx	Freshwater Pond	0.30
PEM1Cx	Freshwater Emergent Wetland	0.02
	Total Acres	6.42

Data Source: National Wetlands Inventory website. U.S. DoI, Fish and Wildlife Service, Washington, D.C. <http://www.fws.gov/wetlands/>